

Tameside

SEND Monitoring Visit

September 2022

Progress Highlights (1)

- Additional c.£1.5m of investment of investment secured LA and Health to deliver [WSOA](#) and provide additional capacity across teams
 - [22nd June 2022](#)
 - [23rd March 2022](#)
 - [9th February 2022](#)
 - [28th September 2022](#)
- Co-produced rebranding, remarketing and reorganisation of Local Offer completed. This is due to go live October 2022.



Tameside SEND Local Offer



What is the SEND Local Offer?

The purpose of the SEND Local Offer is to provide a single place where families can access information, advice, support and services for children and young people (aged 0-25) with SEND.

The Local Offer is also a resource for professionals, volunteers and anyone involved in caring for or supporting young people with SEND.

What is SEND?

A child or young person who has special educational needs and disabilities is referred to as having SEND. This means they need specific, tailored health and education support to reach their full potential.

Who is the Local Offer for?

The Local Offer is for children and young people with SEND, their families, parents and carers.

What is our aim?

Our aim is that children and young people with SEND have the tools, resources and support they need to be fully participating members of the Tameside family.

If you can't find what you are looking for or would like to tell us what you think about our Local Offer, [please click here](#) to go to our feedback page or email us at local.offer@tameside.gov.uk



Progress Highlights (2)

- Co-produced parent/carer survey launched (<https://www.surveymonkey.co.uk/r/SENDparentcarersurvey>) to provide key baseline data and inform service design
- Business Process Review completed with findings reported to Executive Cabinet (awaiting publication) with recommendations for resourcing implementation underway
 - Review has already led to improvements in the use of data to support performance improvement
- First parent carer drop ins to be held 14 October 2022 (due to be held 19/09/22 re-arranged due to additional bank holiday)
- SEND Improvement Group Terms of Reference (ToR) updated project management structure and processes agreed

Progress Highlights (3)

- Additional investment secured for CAMHS, Neurodevelopmental Pathway and Health Therapy Services (OT, SALT, Physio, Dietetics, Paediatrics)
- New support services in place for families
- Health Navigator Service in place
- Health Preparation for Adulthood Strategic Lead appointed
- Health audits and CPD programme underway

Governance

- Governance map and overview (slide 7)
- Revised ToR for SEND Improvement Group



Adobe Acrobat
Document

- Papers from latest SEND Improvement Group (attached)

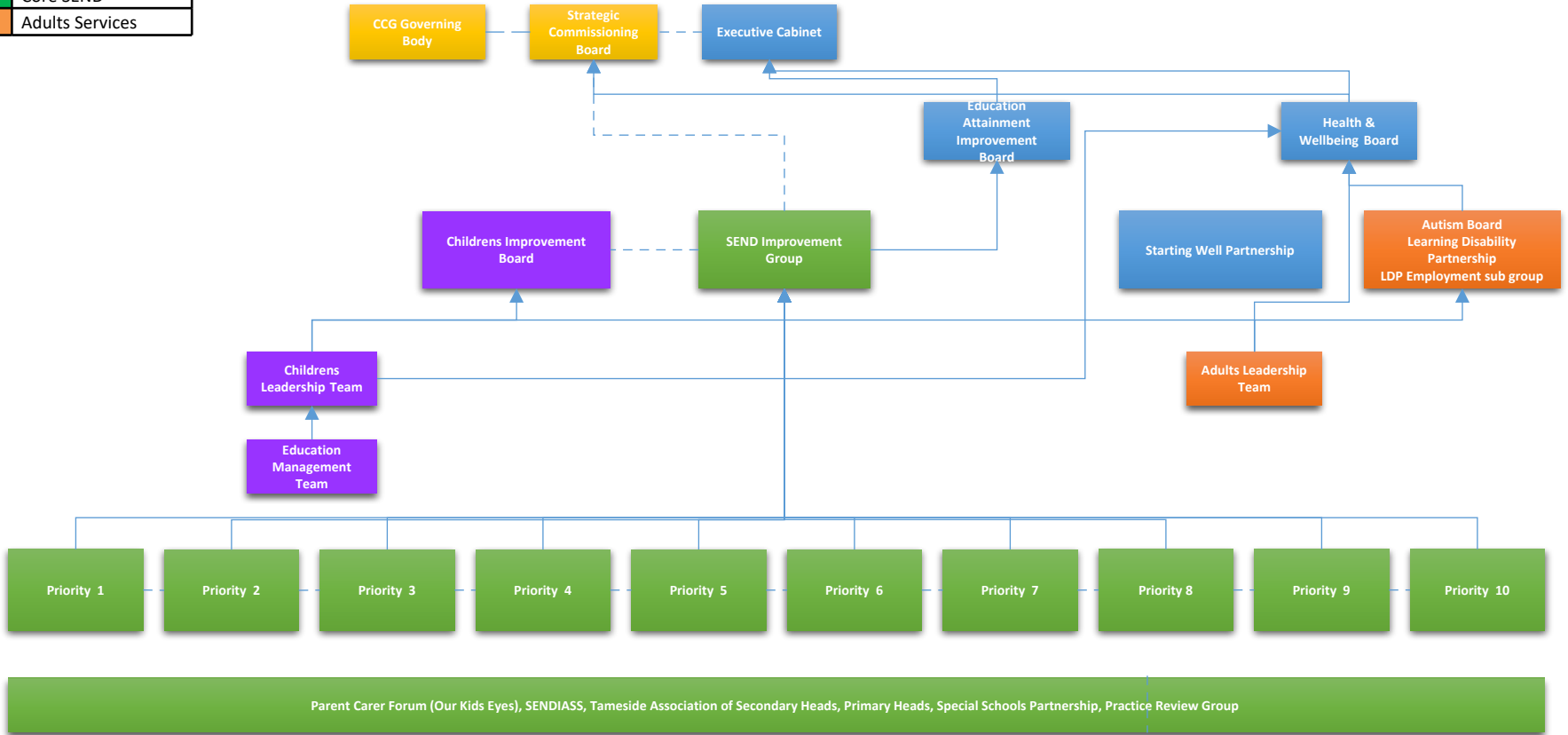


Microsoft Word
Document

- Elected Member Oversight to be provided by Education Attainment and Improvement Board (first update due 18 October 2022)

Tameside SEND Governance Structure

Corporate
Children's Services
Health
Core SEND
Adults Services



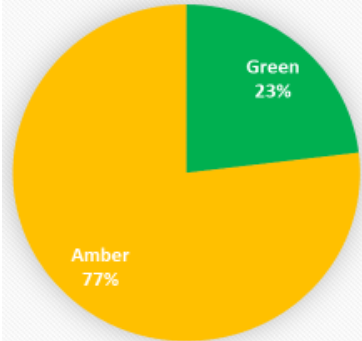
Priority task and finish groups- update

- See DfE Preparation Template
- 88% of actions are green or amber
- Only 3% of actions are red
- 4% not yet started but planned start dates will mean we meet target complete dates.
- Recruitment underway for dedicated PM support (currently supported by PM from Stockport) and DSCO

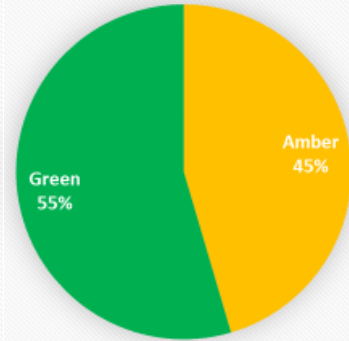


Status by Priority

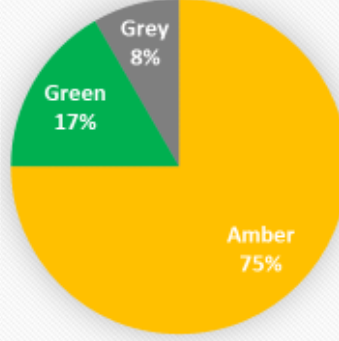
Priority 1



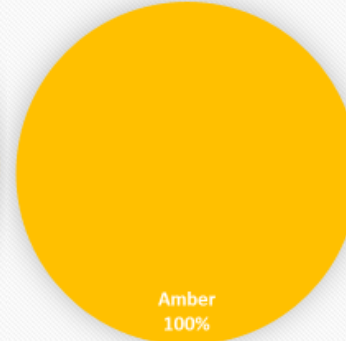
Priority 2



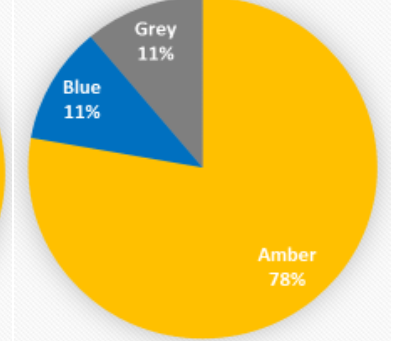
Priority 3



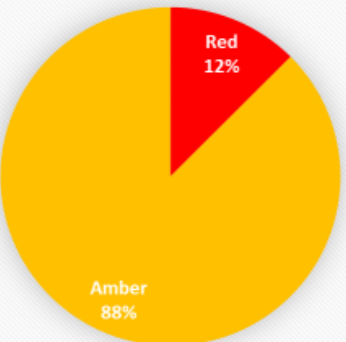
Priority 4



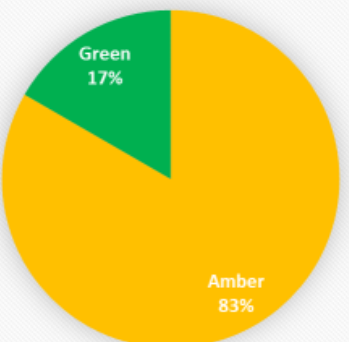
Priority 5



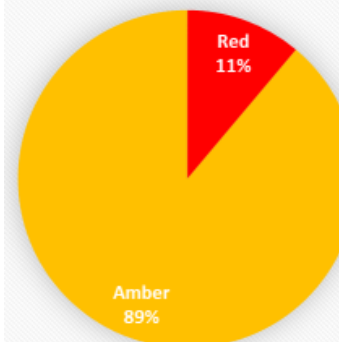
Priority 6



Priority 7



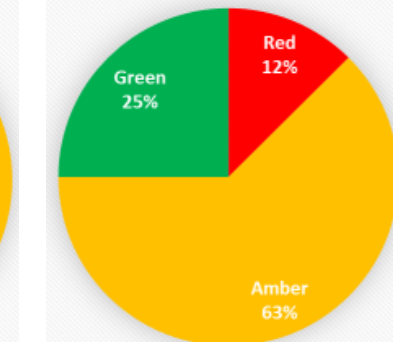
Priority 8



Priority 9



Priority 10



Actions due before Christmas

2022	September	October	November	December
<u>PRIORITY 1</u>	1.1.4 & 1.1.5	1.5.2	1.1.2	
<u>PRIORITY 2</u>	2.1.4			2.1.2 & 2.1.3
<u>PRIORITY 3</u>		3.5.1		
<u>PRIORITY 4</u>				
<u>PRIORITY 5</u>				
<u>PRIORITY 6</u>	6.1.1 – DSCO recruit			6.1.2 & 6.2.2
<u>PRIORITY 7</u>			7.1.2	7.3.5 & 7.3.7
<u>PRIORITY 8</u>		8.2.1 & 8.2.2	8.1.1 & 8.2.4	
<u>PRIORITY 9</u>		9.3.2	1.1.2	
<u>PRIORITY 10</u>	10.1.3 & 10.4.1			

Co production & Engagement of partners

Coproduction

- Parent Consultation Sessions Established
- Local Offer
- Parent / Carer Satisfaction Survey Live
- Regular Meetings with Parent / Carer Forum
- Parent / Carer Navigation Process Established with Health
- Child and Young Person Survey due to go live

Partners

- Refreshed ToR for SENDIG
- Full partner engagement in all work streams and SENDIG

What's next?

- Summary of key actions
 - Child and young person survey due to go live
 - Parent / Carer consultation sessions
 - Refreshed Local Offer due to go live
 - Complaints prioritisation exercise commenced
 - Recruitment of DSCO and PM
 - Prioritisation of actions due before Christmas (see slide 10)

